

Model: Model K-P2		Date: 6-Sep-02	No.: MG073001
Modified Article: Paper Exit Cover		Prepared by: A. Ishiyama	
From: Technical Services sec. Service Planning Dept.			
Reason for Modification:	<input type="checkbox"/> Parts catalog correction <input type="checkbox"/> To facilitate assembly <input type="checkbox"/> Part standardization	<input type="checkbox"/> Vendor change <input checked="" type="checkbox"/> To improve reliability <input type="checkbox"/> Other	<input type="checkbox"/> To meet standards ()
Modification Schedule:	From April 2002 production run		

The Paper Exit Cover has been modified to ensure that it does not open during printing, which can happen if the cover is not closed correctly.

Note: This applies to all models: K-P2:G073/G074.

Old part number	New part number	Description	Q'ty	Int	Page	Index	Note
G0521505	G0521512	Paper Exit Cover	1	X/O	3	35	

Model: Model K-P2		Date: 7-Jan-03	No.: MG073002
Modified Article: Font ROM on the Controller Board		Prepared by: A. Ishiyama	
From: Technical Services sec. Service Planning Dept.			
Reason for Modification:	<input type="checkbox"/> Parts catalog correction <input type="checkbox"/> To facilitate assembly <input type="checkbox"/> Part standardization	<input type="checkbox"/> Vendor change <input checked="" type="checkbox"/> To improve reliability <input type="checkbox"/> Other	<input type="checkbox"/> To meet standards ()
Modification Schedule:	From December 2002 production run		

The font ROM on the controller board has been modified in order to print the Euro currency symbol.

Please refer to RTB Rgene011 for details.

Note: This applies to all models: K-P2: G073/G074 models.

Old part number	New part number	Description	Q'ty	Int	Page	Index	Note
G0735712N	G0735713	Controller Board – G073 Model	1 → 1	X/O	23	5	
G0745712N	G0745713	Controller Board – G074 Model	1 → 1	X/O	23	5	
G0565901		Mask ROM - PCL	1 → 0	X/O	29	1	
	G0565903	Mask ROM – PCL/Euro	0 → 1				

Model: Model K-P2		Date: 10-Sep-03	No.: MG073003
Modified Article: Controller Board		Prepared by: A. Ishiyama	
From: 1st Technical Support Sec. Service Support Dept.			
Reason for Modification:	<input type="checkbox"/> Parts catalog correction <input type="checkbox"/> To facilitate assembly <input checked="" type="checkbox"/> Part standardization	<input type="checkbox"/> Vendor change <input type="checkbox"/> To improve reliability <input type="checkbox"/> Other	<input type="checkbox"/> To meet standards ()
Modification Schedule:	From February 2003 production		

Old part number	New part number	Description	Q'ty	Int	Page	Index	Note
G0735713B	G0735714	Controller Board - G073 Model	1→1	X/O	23	5	
14075678		USB - KL5KUSB200CCFP	1→1	X/O	29	128	
	→14076060	USB2.0 - KL5KUSB200HCFP					
G0695911B		IC - U2PCI-KL5BUDV002CCFP	1→1	X/O	29	2	
	→14076061	IC - USB2.0 I/F : KL5BUDV002ECFP					
G0745713B	G0745714	Controller Board - G073 Model	1→1	X/O	23	5	
14075678		USB - KL5KUSB200CCFP	1→1	X/O	29	128	
	→14076060	USB2.0 - KL5KUSB200HCFP					
G0695911B		IC - U2PCI-KL5BUDV002CCFP	1→1	X/O	29	2	
	→14076061	IC - USB2.0 I/F : KL5BUDV002ECFP					

Reissued: 2-Oct-03

Model: Model K-P2	Date: 22-Sep-03	No.: MG073004a
-------------------	-----------------	----------------

MB Correction

The items in bold italics have been corrected or added.

Modified Article: Base - Manual Feed : adhesion		Prepared by: T.Shintani	
From: 1st Technical Support Sec. Service Support Dept.			
Reason for Modification:	<input type="checkbox"/> Parts catalog correction	<input type="checkbox"/> Vendor change	<input type="checkbox"/> To meet standards ()
	<input type="checkbox"/> To facilitate assembly	<input checked="" type="checkbox"/> To improve reliability	
	<input checked="" type="checkbox"/> Part standardization	<input type="checkbox"/> Other	
Modification Schedule:	From September 2002 production		

Base - Manual Feed (Bypass Tray) in the K-P3 has been modified to prevent paper feed noise during developing. The same change was also applied to these products: K-P1/K-P2.

Note: This applies to all models: K-P2, G073/G074 as well as K-P1, G056/G058.

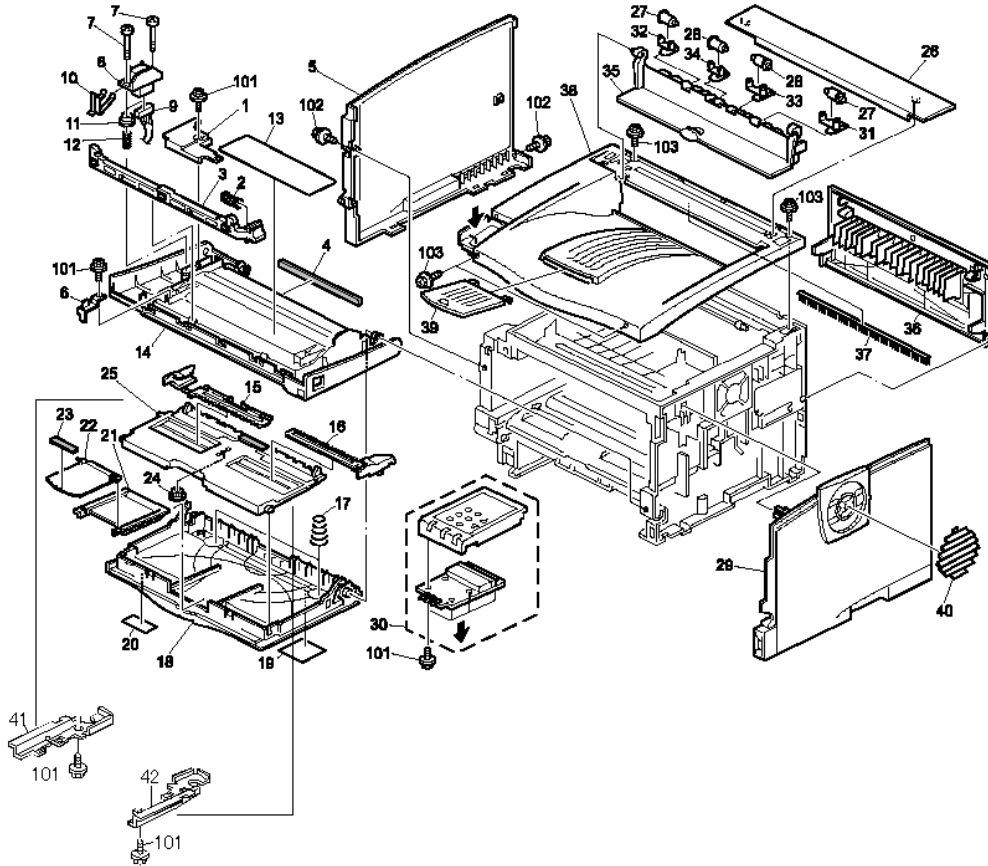
Old part number	New part number	Description	Q'ty	Int	Page	Index	Note
G0523273B	G0763273	Base - Manual Feed : Adhesion	1→1	X/O	3	25	1
	G0763281	Supporting Plate:Base:ManualFE	0→1		3	41	1
	G0763282	Supporting Plate:Base:ManualFE	0→1		3	42	1
	G04503008B 04503008B	Tapping Screw – M3×8	0→1		3	101	1

Note1: The above parts should be replaced together as a set.

Reissued: 2-Oct-03

Model: Model K-P2	Date: 22-Sep-03	No.: MG073004a
-------------------	-----------------	----------------

1.EXTERIOR (G073/G074)



Model: Model K-P2		Date: 22-Sep-03	No.: MG073005
Modified Article: Separation Pad - Bypass		Prepared by: T.Shintani	
From: 1st Technical Support Sec. Service Support Dept.			
Reason for Modification:	<input type="checkbox"/> Parts catalog correction <input type="checkbox"/> To facilitate assembly <input type="checkbox"/> Part standardization	<input type="checkbox"/> Vendor change <input checked="" type="checkbox"/> To improve reliability <input type="checkbox"/> Other	<input type="checkbox"/> To meet standards ()
Modification Schedule:	From October 2002 production		

Separation Pad - Bypass has been modified. When using special paper in the Japanese market, the paper does not pass correctly and the tip part of the paper bends

Note: This applies to all models K-P2:G073/G074 as well as:K-P1:G056/G058.

Old part number	New part number	Description	Q'ty	Int	Page	Index	Note
G0523290F	G0763290	Separation Pad - Bypass	1→1	X/O	7	13	

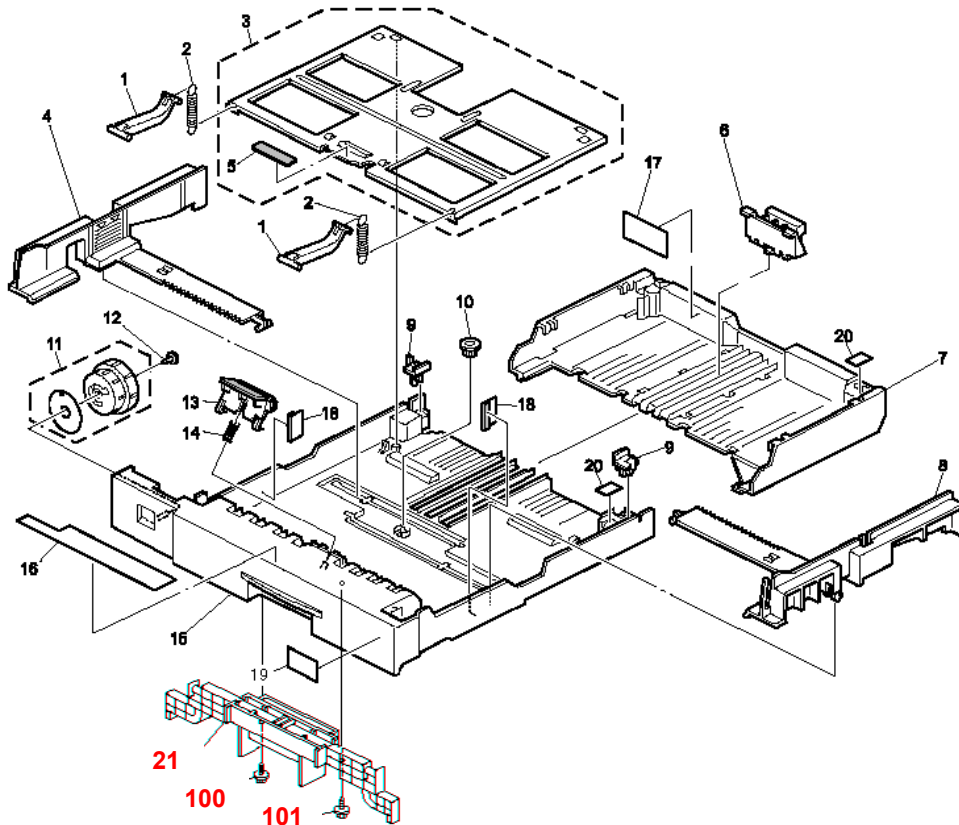
Model: Model K-P2	Date: 26-Sep-03	No.: MG073006
-------------------	-----------------	---------------

Modified Article: Paper Tray Ass'y		Prepared by: T.Shintani	
From: 1st Technical Support Sec. Service Support Dept.			
Reason for Modification:	<input type="checkbox"/> Parts catalog correction <input type="checkbox"/> To facilitate assembly <input type="checkbox"/> Part standardization	<input type="checkbox"/> Vendor change <input checked="" type="checkbox"/> To improve reliability <input type="checkbox"/> Other	<input type="checkbox"/> To meet standards ()
Modification Schedule:	This item is now available as a service part .		

These changes come from the addition of the Paper Tray Grip in order to improve pulling and pushing the paper tray. These changes are the same as for the K-P1. This applies to all models K-P2:G073/G074.

Old part number	New part number	Description	Q'ty	Int	Page	Index	Note
G0763032	G0763049	Paper Tray Ass'y – EUR/Asia	1→1	X/O	15	*	
G0763031	G0763048	Paper Tray Ass'y – NA	1→1	X/O	15	*	
G0523061	G0763061	Paper Tray - Front	1→1	X/O	15	15	
	G0763063	Grip - Paper Tray Ass'y	0→1	X/O	15	21	
	04503008B	Tapping Screw - M3×8	0→1	X/O	15	101	

7.CASSETTE (G073/G074)



Model: Model K- P2		Date: 1-Jun-04	No.: MG073007
Modified Article: Discharge Brush at paper exit		Prepared by: A. Ishiyama	
From: 1st Technical Support Sec. Service Support Dept.			
Reason for Modification:	<input type="checkbox"/> Parts catalog correction <input type="checkbox"/> To facilitate assembly <input type="checkbox"/> Part standardization	<input type="checkbox"/> Vendor change <input checked="" type="checkbox"/> To improve reliability <input type="checkbox"/> Other	<input type="checkbox"/> To meet standards ()
Modification Schedule:	The new part is available at SPC.		

The following has been modified to further improve charge removal performance, especially for print jobs made in duplex mode or under low-humidity conditions.

Note: The new part is common to Model K-P3 (G091).

Old Part Number	New Part Number	Description	Q'ty	Int	Page	Index	Note
G0524886		Discharge Brush – Paper Exit	1→0	X/O	3	37	
	G0524889	Discharge Brush: Exit: Ass'y	0→1				

Model: Model K- P2	Date: 20-Jan-05	No.: MG073008
--------------------	-----------------	---------------

Modified Article: Stay – Paper Feed		Prepared by: A. Ishiyama	
From: 1st Technical Support Sec. Service Support Dept.			
Reason for Modification:	<input type="checkbox"/> Parts catalog correction <input type="checkbox"/> To facilitate assembly <input checked="" type="checkbox"/> Part standardization	<input type="checkbox"/> Vendor change <input type="checkbox"/> To improve reliability <input type="checkbox"/> Other	<input type="checkbox"/> To meet standards ()
Modification Schedule:	From January '05 production		

Old Part Number	New Part Number	Description	Q'ty	Int	Page	Index	Note
G0523100	G1112571	Stay – Paper Feed	1→1	X/O	9	7	

Change/Reason: Parts standardization with the next model (Model K-P4).

Model: Model K- P2		Date: 20-Jan-05	No.: MG073009
Modified Article: Power Cord – 230V		Prepared by: A. Ishiyama	
From: 1st Technical Support Sec. Service Support Dept.			
Reason for Modification:	<input type="checkbox"/> Parts catalog correction <input type="checkbox"/> To facilitate assembly <input checked="" type="checkbox"/> Part standardization	<input type="checkbox"/> Vendor change <input type="checkbox"/> To improve reliability <input type="checkbox"/> Other	<input type="checkbox"/> To meet standards ()
Modification Schedule:	From January '05 production		

Old Part Number	New Part Number	Description	Q'ty	Int	Page	Index	Note
GZ000003	G1025502	Power Cord – 230V	1→1	O/O	11	18	

Change/Reason: Parts standardization with the next model (Model K-P4).

Note: This applies only to the EU models (230V).